



KMB-70 Series

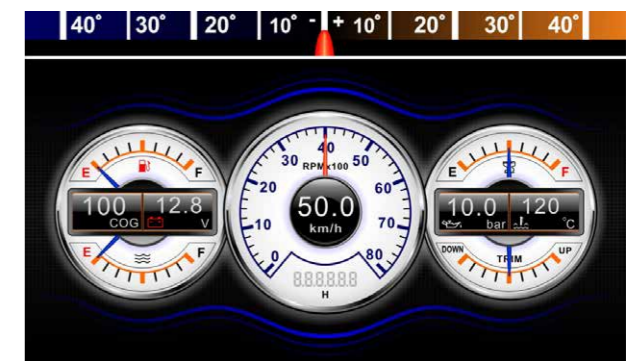
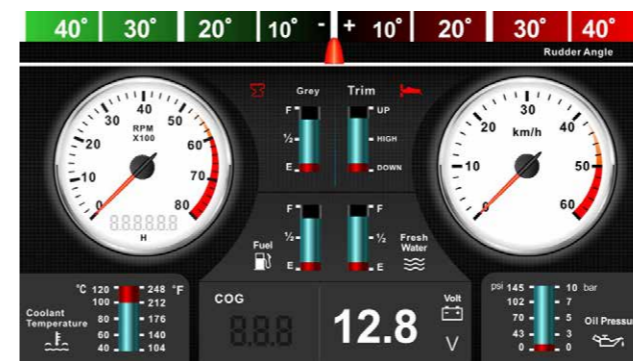
The KMB-70 Series is an Integrated Data Monitor with an advanced TFT (Thin Film Transistor) screen. The KMB-70 displays real time network information including engine output, fluid levels, and speed. KUS can also customize the unit to meet customer requirements. The unit is compatible with J1939 and NMEA 2000 systems. The KMB-70 is a perfect fit for marine applications that monitor information over the J1939 or NMEA 2000 network.



Integrated Data Monitor



Display Modes



Monitoring Data

- ◆ **Engine** : Speed, Trim, Coolant Water Temperature, Oil Pressure, Hours
- ◆ **Navigation**: Course Over Ground(COG), Speed Over Ground(SOG)
- ◆ **Fluid Management**: Fuel Level, Fresh Water Level, Black Water Level
- ◆ **Rudder Position and Battery Voltage**

Specification

- ◆ Model: KMB-70
- ◆ Art No.: JKE00334
- ◆ Dimension: 7.0 inches
- ◆ Resolution: 800x480 pixels
- ◆ Operation Voltage: 9-32V DC
- ◆ Operation Current: 400mA (12V)
- ◆ Operation Temp.: -20°C ~ +70°C / -4°F ~ 158°F (Touch screen: -20°C ~ +60°C / -4°F ~ 140°F)
- ◆ Cable Accessories: 1m length cable included.

Key Features

- ◆ 32-bit Cortex-M3 core + high-speed FPGA framework
- ◆ Fast start-up speed
- ◆ An easy to use and switchable interface that supports multiple languages and datas
- ◆ A bright high-resolution touch screen display that can be seen in direct sunlight
- ◆ Compatible with J1939 & NMEA2000 including KUS Sea N series products .

