



Sensing Quality, Gauging Success!

3350 Davie Road, Suite 203

Davie, FL 33314

(954) 463-1075

www.kus-usa.com

www.kusauto.com/en

Product Data Sheet



Description:

The CP-2 allows the user to monitor multiple tanks levels without the need of multiple gauges, thereby saving precious dashboard space. The CP-2 allows the user to toggle between and monitor 2 tanks by a flip of a switch.

Product Type:	CP-2
Product Name:	CP-2
Bezel:	Plastic in Black
Mounting Dimension:	100.5*79mm
Protection Rating:	IP7 for front; works up to 1m under water
Signal:	240~33Ω
Operating Voltage:	12V
Background light	Red or Yellow
Connector:	Multi-plugs socket connection
Indicating Range:	Empty- Full



Sensing Quality, Gauging Success!

3350 Davie Road, Suite 203

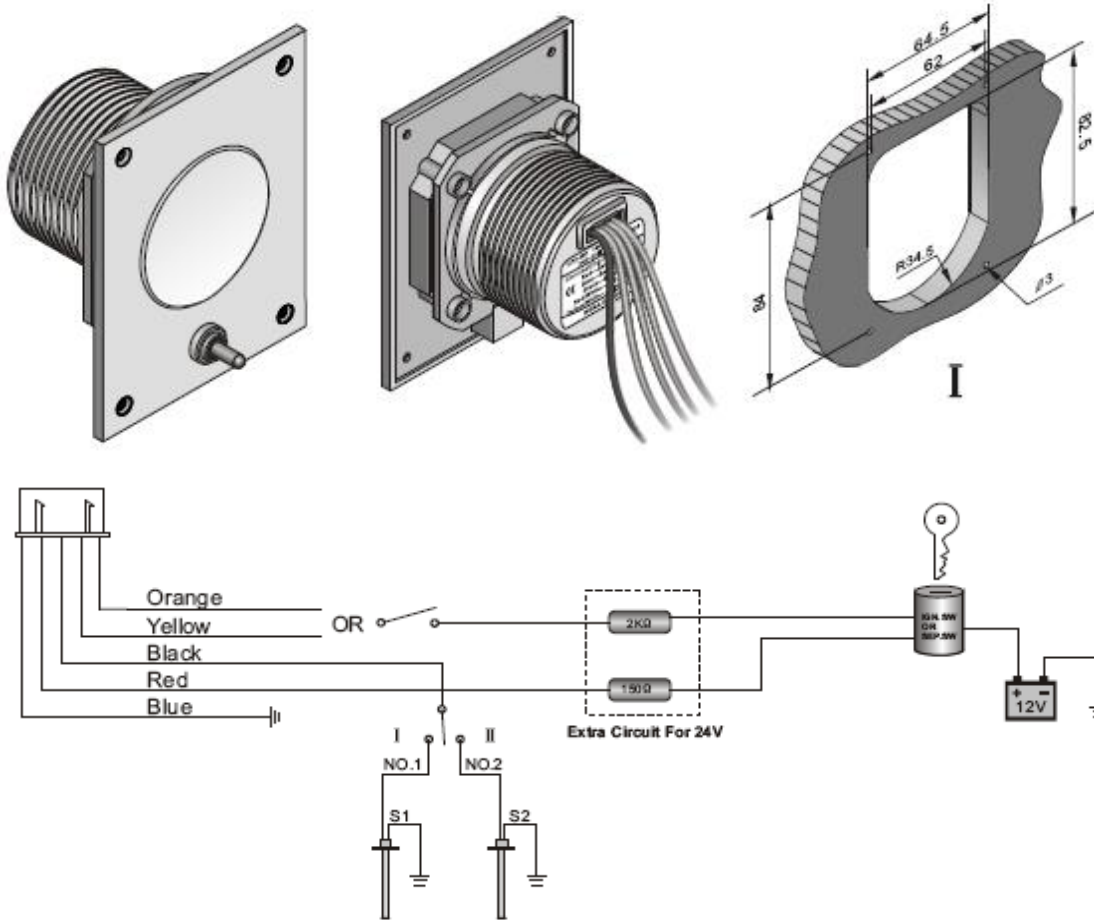
Davie, FL 33314

(954) 463-1075

www.kus-usa.com

www.kusauto.com/en

Installation Instructions



Install/ adjust instruction:

1. Cut a hole as I showed in the instrument panel, and use screws to fix the gauge. To make sure you have at least 2-3/16 " (55mm) at the backside of panel to install the gauge.
2. Connect wires according to wire diagram, cable 1 for I , Note optional hook up for 24 volt applications.
3. Hook up only one of the gauge (red or yellow) light options.